

54Mbps Wireless LAN Card

Quick Installation Guide

This *Quick Installation Guide* only provides you with the basic instructions. For more detailed information, please refer to the *Manual* file on the provided CD.

* All other product names and trademarks in this document are trademarks of their respective companies.

1

System Requirements

To use the Wireless LAN Card, your computer must meet the following minimum requirements:

- ▶ 64 MB of RAM, additional memory recommended
- ▶ Hard disk space at least 30 Mbytes
- ▶ Windows® 98(SE)/Me/2000/XP
- ▶ UL listed I.T.E. computers
- ▶ For CardBus wireless adapter: 32-bit Cardbus expansion slot
- ▶ For PCI wireless adapter: One available PCI slot *



The operating voltage of PCI adapter is 3.3V. If you install the PCI adapter in motherboards that support only 5V PCI adapter, your computer will not work properly.

Caution

2

Software and Hardware Installation



Caution

For CardBus adapter: Do not insert the wireless adapter to your computer before installing its driver. If this happens, the Windows PnP function will detect the wireless adapter and issue a dialog box requesting for its driver. Click **Cancel** to quit the wizard and remove the Wireless LAN Card from your computer.

For PCI/MiniPCI adapter: If your system has not been installed with the driver, the Windows PnP function will detect the wireless adapter and issue a dialog box requesting for its driver. Click **Cancel** to quit the wizard at this point.

Basic Installation Procedures

Please note that operation system-specific situation may occur during or after the installation process. You should follow the on-screen instructions to proceed. In OS-specific situations, you should follow the on-screen instructions to proceed. You can refer to the general guidelines provided in next section for further information.

1. Close all Windows programs that are running.
2. Insert the provided Software Utility CD into your CD-ROM drive and select **Utility&Driver**. Or, run **Setup.exe** from **D:\Utility&Driver** of the Software Utility CD where **D** is the drive letter.
3. When the welcome screen pops up, click **Next**.
4. When the **License Agreement** screen appears, click **Yes**.
5. When the **Choose Destination Location** screen appears, click **Next**.
6. For CardBus wireless adapter only. When prompted to insert your wireless adapter into the PCMCIA slot of your computer, do as the dialog request. For Windows 98/Me users, skip the next step and refer to table below to complete the installation.
7. Click **Finish**. Subject to the type of your Wireless LAN Card, the Windows may reboot.

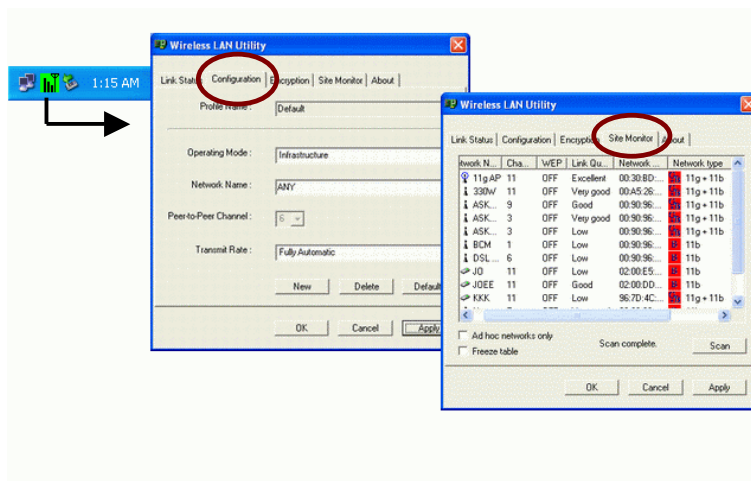
For Windows 2000 and XP users, the installation is complete. For Windows 98se and Me users, follow the table below to complete the installation.

Operating System	Instruction
Windows 98(SE)	<ol style="list-style-type: none"> 1. Windows PnP function will detect the wireless adapter and issue a dialog box requesting for its driver. Click Next. 2. When Windows OS pops up a dialog box requesting for driver, select Search for the best driver for your device (Recommended) and click Next. On the next screen, select the Specify a location radio button. Click Next and follow the on-screen instructions to complete this step. 3. When prompted for Windows 98(SE) CD-ROM, click OK. Then enter the path to Windows 98(SE) original files, and click OK. 4. Restart your computer if prompted.
Windows Me	<ol style="list-style-type: none"> 1. Windows PnP function will detect the wireless adapter and issue a dialog box requesting for its driver. Click Next. 2. When Windows OS pops up a dialog box requesting for driver, select Specify the location of the driver (Advanced) and click Next. On the next screen, select the Specify a location radio button. Click Next and follow the on-screen instructions to complete this step. 3. Restart your computer if prompted.

3 Using the Wireless LAN Utility for Configuration

Accessing the Wireless LAN Utility

After software and hardware installation, you should be able to find the wireless monitor icon located on the system tray. Double-clicking the wireless monitor tray icon on the system tray will open the Wireless LAN Utility window. You can click on the **Configuration** tab to set up your wireless network or on the **Site Monitor** tab to select which network you wish to join in. See ensuing subsections for instructions of basic configurations.



Basic Configurations

1. Launch the vendor's wireless LAN utility and select the **Configuration** tab.
2. Click the **New** button and configure the settings below:

Profile Name: Enter a name to identify your current settings.

Operating Mode: Select **Infrastructure** or **Ad-Hoc** (peer-to-peer).

Network Name: Specify the name of the WLAN group you want to participate in.

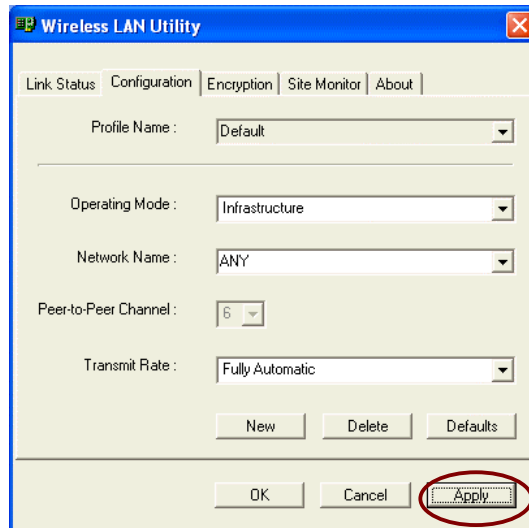
Peer-to-Peer Channel: Select the channel for your wireless network (for Ad-Hoc mode ONLY).

Note that the available channels are different according to your geographic location. Make sure to select the legal frequency channels allowed in your regulatory domain.

- 1-11 channels for US, Canada (FCC)
- 1-14 channels for Japan (TELEC)
- 1-13 channels for Europe (ETSI)
- 10-13 channels for France

Transmit Rate: Select the speed of the data transmission. The default setting (**Fully Automatic**) allows the wireless adapter adaptively adjust its data rate as the signal strength warrants.

3. Click **Apply** to enable your settings.



After clicking on the Apply button, the **Link Status** tab will appear to display whether your wireless adapter has successfully associated with your target AP or wireless client. If WEP encryption is required, proceed to next section for instructions.

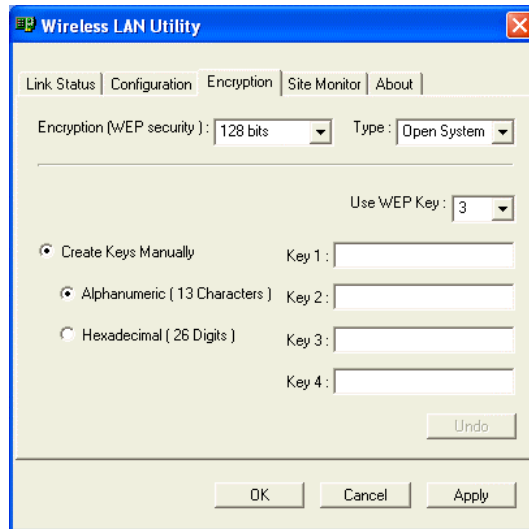
Enabling Encryption

If encryption is enabled in your target AP or wireless client, your wireless adapter must use identical security setting to ensure successfully authentication and data transmission.

1. Launch the vendor's wireless LAN utility and select the **Encryption** tab.
2. Select **64 bits** or **128 bits** as the WEP key length. (You must use the same encryption length as used by your target wireless network.)
3. From the **Type** list, select the required authentication type. (You must use the same authentication method as used by your target wireless network.)
 - **Open System:** If your target wireless network uses **Open System**, your authentication request will be always accepted.
 - **Shared Key:** If your target wireless network uses **Shared Key**, your wireless adapter must be set to use correct key to pass the authentication. If this option is selected, your wireless adapter must use identical WEP keys as the target wireless network.
4. Choose between **Alphanumeric** or **Hexadecimal** as the key format and then enter up to four keys in the provide fields.

When using Hexadecimal format, only digits 0-9 and letters a-f, A-F are allowed. Make sure to enter the character matching the required key format and length as below:

	ASCII characters	Hexadecimal digits
64 bits	5 alphanumeric characters	10 hexadecimal digits
128 bits	13 alphanumeric characters	26 hexadecimal digits



5. From the **Use WEP Key** list select which key you want to use to encrypt your transmitting data.
6. After you finished all the encryption settings, click **Apply** to activate the changes.



Note

When setting WEP keys for data encryption, all the wireless stations and/or Access Points must use the same encryption key values. For example, if you use Key 1 on your wireless adapter and a value is assigned, then the same value must be assigned to Key 1 for all the users in a wireless network.

After clicking **Apply** the setting take effect immediately and you will be led to the **Link Status** tab. You can check whether your wireless adapter has successfully associated with your target AP or wireless client.